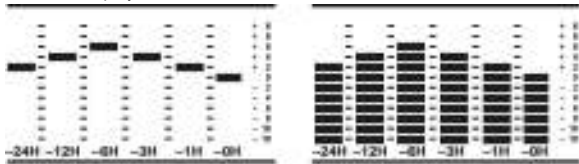


TRACEABLE® COMPACT DIGITAL BAROMETER INSTRUCTIONS

HOW TO SELECT THE BAR OR LINE CHART FOR THE PRESSURE TREND

- In bar chart display, press and hold the [ALT] button and then reset the unit by pressing the [RESET] button on the back of the unit simultaneously, to get the line chart display.



LINE CHART

BAR CHART

- In the line chart display, reset the unit by pressing the [RESET] button once on the back of the unit to get the bar chart display.

Note: Either action will reset the unit and lost the previous readings/settings will be lost.

HOW TO READ THE RELATIVE HUMIDITY AND COMFORT INDICATORS

The unit shows the indoor relative humidity and such readings is temperature compensated. At the same time, the comfort indicators — COMFORT, WET, or DRY will tell you if the current environment is comfortable, too wet or too dry. The comfort indicators will appear on the display when the following conditions are satisfied.

Indicator displays on the unit	Temperature Range	Humidity Range	Shows that the Current Environment
COMFORT	20 to 25°C (68 to 77°F)	40% RH to 70% RH	Ideal range for relative humidity and temperature
WET	Full Range	Over 70% RH	Contain excess moisture.
DRY		Below 40% RH	Contain inadequate moisture

Note: There is environment that is not 'COMFORT', not 'WET', and not 'DRY'. If it is the case, there will be no indicator displayed.

THE RESET BUTTON

If the unit does not operate properly, use a pointed object to push the [RESET] button once, which is located on the back of the unit.

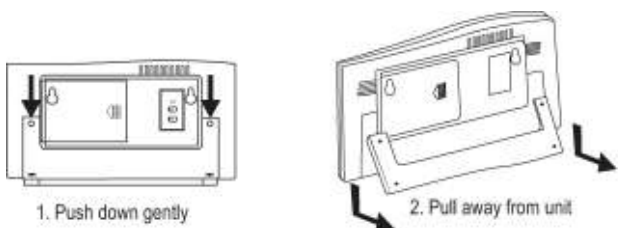
LOW BATTERY SIGNAL INDICATION

If the voltage of the batteries becomes low, the 'BATT' indicator will be displayed. Please replace the batteries when the 'BATT' indicator is displayed.

FREE STANDING OR WALL MOUNTING

Stand: Your barometer comes with a built-in stand for tabletop use. On the back of the unit, ease the plastic stand from its slot and place the stand in the recess holes are located on the bottom of the case.

Wall Mount: On the back of the barometer you'll find two recessed holes for wall hanging. Place two screws (or whatever device you choose) into the wall until the head extends a little more than 4mm from the wall. Place your barometer over the screw in the hanger slot, until it locks into place.



1. Push down gently

2. Pull away from unit

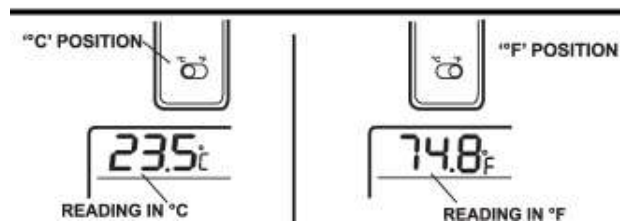
HOW TO RECALL THE STORED PRESSURE HISTORY READING

The barometric pressure reading is being stored constantly during the past 24 hours. It can be recalled and displayed for each hour.

- By pressing the [HISTORY] button repeatedly, the barometric pressure readings which have been stored over the past 24 hours, will appear on the display in mb/hPa or inHg with the recording time up to 24 hour and back to '0' hour. (0 hour means present time).
- Press and hold the [HISTORY] button for faster advancing.
- If the pressure in one particular history hour has not yet been recorded, it will show '---' for that hour on the past history review display.



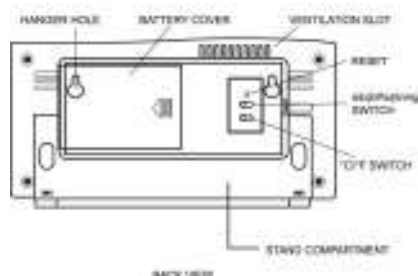
SELECTING THE TEMPERATURE UNITS OF MEASURE



The switch on the back of the barometer selects between degrees Celsius and Fahrenheit. To select Celsius units, set the switch to °C. To select Fahrenheit units, set the switch to °F.

SELECTING THE PRESSURE UNITS OF MEASURE

The switch on the back of the barometer selects between mb/hPa and inHg. To select mb/hPa, set the switch to mb/hPa. To select inHg, set the switch to inHg.

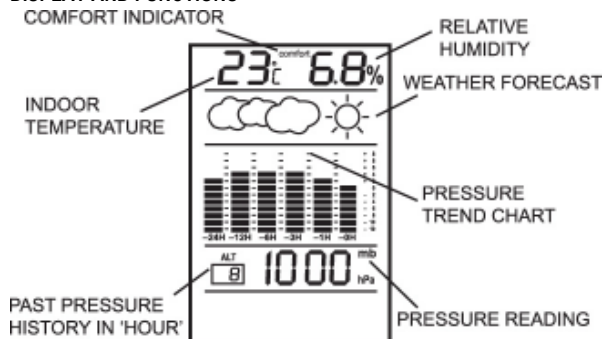


INSTALLING AND REPLACING BATTERIES

The unit uses four UM-4 'AAA' size batteries. If the 'BATT' indicator appears, removes the exhausted batteries and follow these steps to install or replace the batteries:

- Slide the battery door in the direction of the arrow.
- Insert the batteries as indicated by the polarity symbols (+ and -) marked inside the battery compartment, and fill up these batteries sequentially from the lower to the upper cavity.
- Replace the battery door.

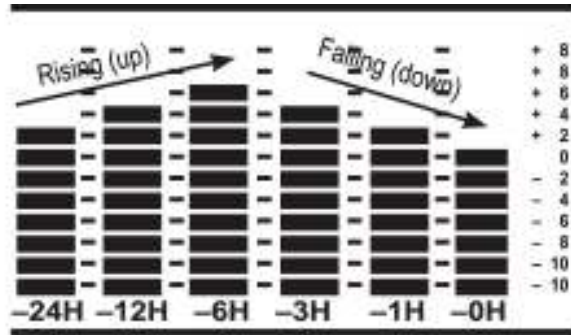
DISPLAY AND FUNCTIONS



HOW TO READ THE ILLUSTRATED WEATHER FORECAST SYMBOLS

Your digital barometer detects barometric pressure changes and the LCD displays the illustrated weather symbols which indicate the weather forecast for 12 to 24 hours ahead, for an area with a radius of about 19-31 miles.

This gives you the pressure trend over the last 24 hours. The weather will be getting better if this trend is rising or the weather will be getting worse if this trend is falling.



Bar Graph Pressure Trend

This can give you the pressure trend during the past 24 hours. It is only possible to measure the barometric pressure trend properly if your barometer remains at the same altitude.

Important:

When moving around at different altitudes within a short time period, the air pressure changes, the barometric pressure change is not correct, until the barometric pressure change is not correct, until the barometer has remained at a constant altitude for 24 hours.

The weather will be getting better (worse) if this chart shows the bar marks moving up (down) towards the present time '0H'. However, please note again the accuracy of a weather forecast based on the barometric pressure reading. It is considered to be about 70-75%.

Note: After replacing the batteries, the whole display will be turned on for about 3 seconds and then show the following:

- Indoor temperatures shows the current reading
- Indoor relative humidity shows the current reading
- Weather forecast shows slight cloudy (a sun shows with the cloud indicator)
- Pressure trend shows steady
- Barometric pressure shows the current reading

The unit takes about 24 hours to store the barometric pressure data. Until that time has elapsed, the pressure trend and weather forecast symbols may not reflect actual weather forecast for your area.

Indicator displays on the unit				
Forecast	Sunny	Slightly Cloudy	Cloudy	Rainy

Important:

- The accuracy of weather forecasting when using pressure trend alone is about 70 to 75 percent and, therefore, we cannot be held responsible for any inconveniences caused by an inaccurate weather forecast.
- The weather forecast symbols may not reflect the current weather condition. The symbols are forecasting the future.
- A 'Sunny' forecast covering the night-time reflects fine clear weather.

HOW TO READ THE BAR GRAPH PRESSURE TREND

Store memory of the barometer pressure changes are displayed on the chart, in 5 steps indicating the pressure 1,3,6,12, and 24 hours ago. This chart is plotted by comparing the past barometric pressure to the present pressure. The scale on the right shows the comparison result. The '0' in the middle of the scale means equal to present pressure, '+2' means the past pressure was higher than the present pressure by 2 mb.

ABOUT THE ALTITUDE SETTING

For monitoring the local barometric pressure reading. The user needs to select the 0 meter (present value) for monitoring the local barometric pressure.

For monitoring the Sea Level barometric pressure reading at certain altitude. The user needs to select the altitude of the area for monitoring the Sea Level barometric pressure at that altitude.

HOW TO SET THE ALTITUDE

Press and hold the [ALT] button for 2 seconds to set the altitude. The 'ALT' indicator will turn on with the altitude setting flashing (display in meter). Increase/decrease the altitude in steps of 10 meters by pressing [▲] or [▼] button. Press and hold [▲] or [▼] for faster setting.

Press the [ALT] button again to set the altitude. At this time the previous pressure display will reappear. If the altitude has been changed, the 'ALT' indicator flashing until a new sampling takes place and the pressure reading is then compensated with the new altitude.

WARRANTY, SERVICE, OR RECALIBRATION

For warranty, service, or recalibration, contact:

CONTROL COMPANY

4455 Rex Road
 Friendswood, Texas 77546 USA
 Ph. 281-482-1714 Fax 281-482-9448
 E-mail sales@control3.com
 www.control3.com

Control Company is ISO 9001 Quality-Certified by DNV and ISO 17025 accredited as a Calibration Laboratory by A2LA.